

DRAWING NUMBER
51/174

DRAWING NUMBER

DRAWING NUMBER

DRAWING NUMBER

A PART OF TARTAN LAKES-PUD
TARTAN LAKES PLAT NO. 3 - P.U.D.
LYING IN SECTIONS 14, 15, 22 AND 23, TOWNSHIP 45 SOUTH, RANGE 42 EAST
BEING A REPLAT OF A PORTION OF BOYNTON GARDENS, ACCORDING TO THE PLAT THEREOF, AS RECORDED IN PLAT BOOK 6, AT PAGE 32, OF THE PUBLIC RECORDS OF
COUNTY OF PALM BEACH, STATE OF FLORIDA.
APRIL, 1985

THIS INSTRUMENT WAS PREPARED BY WM. B. VAN CAMPEN, S.L.S., IN THE OFFICES OF BENCH MARK LAND SURVEYING AND MAPPING, INC., 2833 EXCHANGE COURT, WEST PALM BEACH, FLORIDA 33409. TELEPHONE: (305) 689-2111

SHEET 5 OF 5

FOR MATCH SEE SHEET 4 OF 5

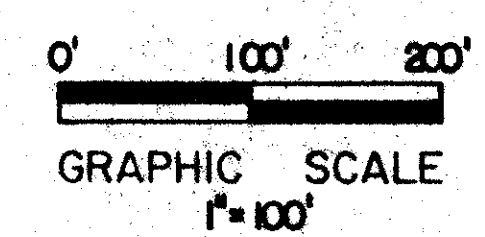
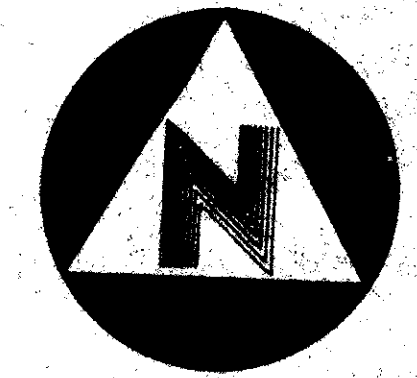
174

STATE OF FLORIDA
COUNTY OF PALM BEACH

THIS PLAT WAS FILED FOR RECORD AT _____ OF _____ A.D. AND DULY RECORDED IN PLAT BOOK _____ ON PAGES _____ AND _____

JOHN B. DUNKLE
CLERK, CIRCUIT COURT

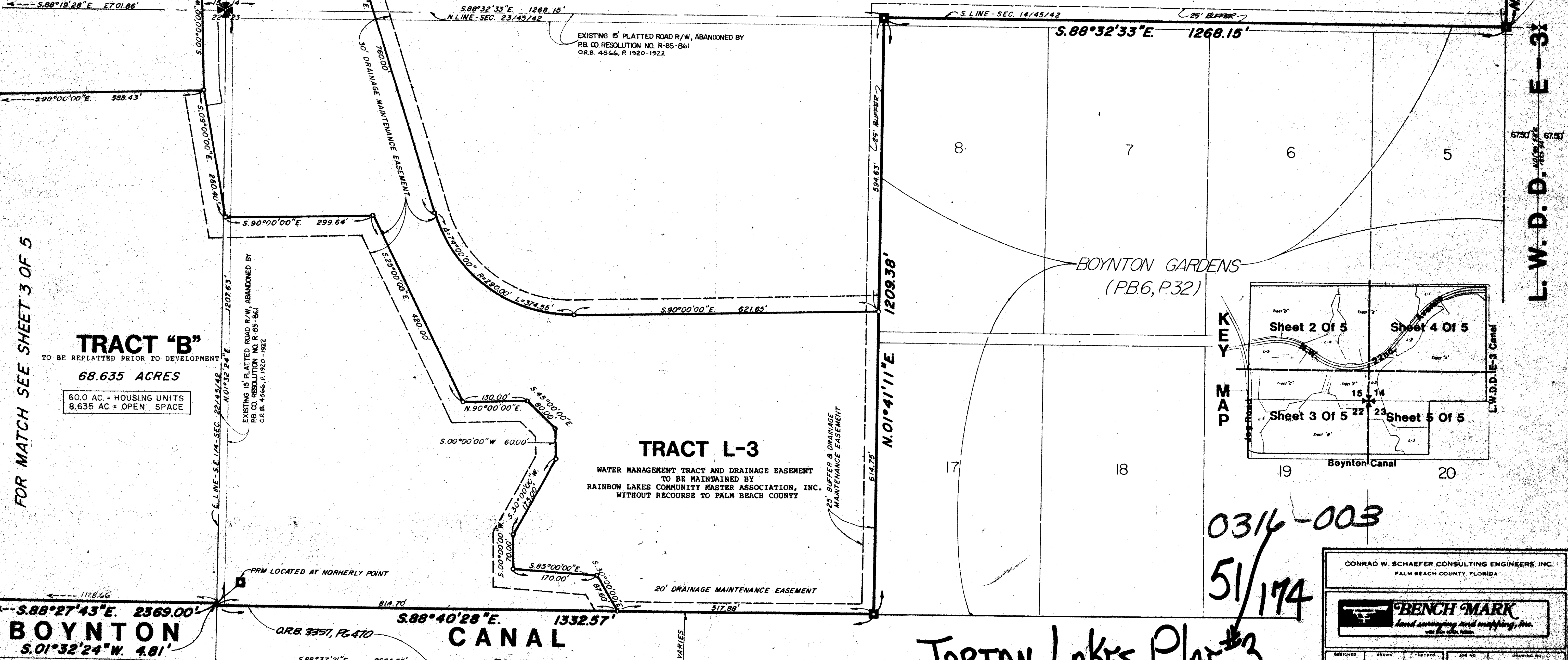
BY _____ DC



TRACT "F"
(SCHOOL SITE)
15.00 ACRES

TRACT L-3

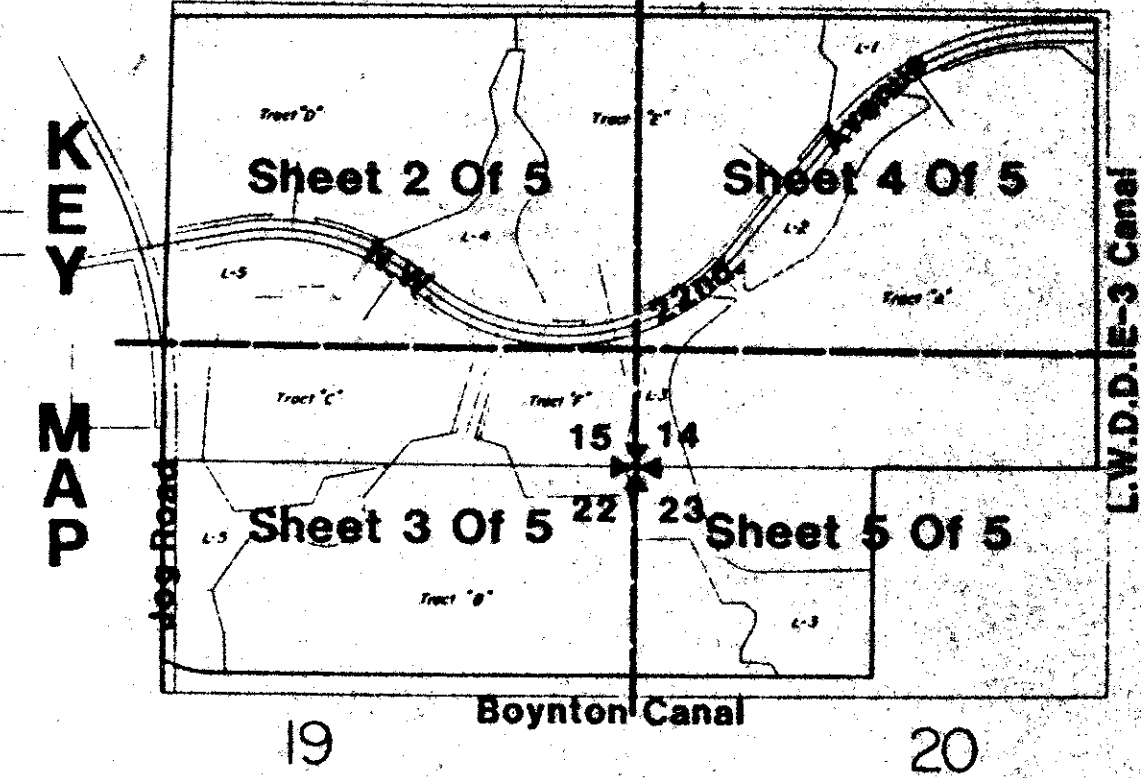
TRACT "A"
TO BE REPLATTED PRIOR TO DEVELOPMENT
109.907 ACRES



FOR MATCH SEE SHEET 3 OF 5

TRACT "B"
TO BE REPLATTED PRIOR TO DEVELOPMENT
68.635 ACRES
60.0 AC. = HOUSING UNITS
8.635 AC. = OPEN SPACE

TRACT L-3
WATER MANAGEMENT TRACT AND DRAINAGE EASEMENT TO BE MAINTAINED BY RAINBOW LAKES COMMUNITY MASTER ASSOCIATION, INC. WITHOUT RECOURSE TO PALM BEACH COUNTY



0314-003
51/174

TARTAN LAKES PLAT #3

CONRAD W. SCHAEFER CONSULTING ENGINEERS, INC.
PALM BEACH COUNTY, FLORIDA

BENCH MARK
Land surveying and mapping, Inc.

DATE	SCALE	APPROVED	FILE NO.	SHEET NO.
12-26-84	1"=100'	CWS		5